

TANK DATA					
DESIGN	TAG NUMBER:	TK-7601	L2348		
	DESCRIPTION:	PROCESS CONDENSATE TANK	REV. D		
	P&ID NUMBER:	61310-PI-7601			
	FABRICATION TYPE:	FIELD FABRICATED, VERTICAL			
	NAT'L BOARD STAMP:	N/A			
	CODE:	API 650			
	CODE STAMP:	NO			
	EARTHQUAKE FACTOR:	PER DELTA-T SPEC 61310-SITECOND-001			
	BASIC WIND SPEED:	PER DELTA-T SPEC 61310-SITECOND-001			
	OPERATING PRESSURE:	PSIG	0.5		
	OPERATING TEMPERATURE:	°F	170		
	DESIGN PRESSURE:	"H2O VAC / PSIG	3.5" / 0.25		
	DESIGN TEMPERATURE: (MIN/MAX)	°F	-5 / 300		
	VOLUME, NOMINAL	GAL	219,980		
	VOLUME, TOTAL	GAL	244,422		
	FLUID SPECIFIC GRAVITY:	0.99			
EMPTY WEIGHT:	LB.	49,233			
FLOODED WEIGHT:	LB.	2,058,381			
MATERIAL	BOTTOM:	A240 TP 304			
	SHELL:	A240 TP 304			
	ROOF:	A240 TP 304			
	INTERNAL STEEL:	A240 TP 304			
	EXTERNAL STEEL:	A 36 CS			
	INTERNAL PIPING:	A240 TP 304			
	NOZZLES: (FLANGES)	A182 TP 304			
	(NECKS)	A312 TP 304			
	MANHOLE NOZZLE:	A312 TP 304			
	MANHOLE COVER:	A182 TP 304			
	COUPLINGS:	A312 TP 304			
	BOLTS NUTS:	A193 GR. B7 / A194 GR. 2H			
	GASKETS:	ANSI B16.5 GASKET, GARLOCK 3000, PTFE OR EQUAL, OR EPDM			
	ELECTRODES:	ER308L / E308L			
CORROSION ALLOWANCE:	N/A				
MISS DATA	STRESS RELIEF:	N/A			
	GRINDING:	N/A			
	SURFACE PREP. INT.:	N/A			
	SURFACE PREP. EXT.:	N/A			
	PAINT INTERIOR:	N/A			
	PAINT EXTERIOR:	N/A			
	INSULATION:	3" FIBERGLASS OR MINERAL WOOL BY OTHERS			
CLEANING:	N/A				
TESTING	HYDROSTATIC TESTING:	YES			
	RADIOGRAPHY	NONE			
NOZZLE SCHEDULE					
MK	SIZE	SERVICE	RATING	TYPE	QTY
A	24"	MANWAY	API 650 STD.	S.O.R.F. FLG. W/COVER, HINGE	1
B	20"	HATCH	API 650 STD.	S.O.R.F. FLG. W/COVER, HINGE	1
C	6"	PROCESS CONDENSATE INLET	CLASS 150	S.O.R.F. FLG.	1
D	6"	PROCESS CONDENSATE RECIRC	CLASS 150	S.O.R.F. FLG.	1
E	4"	WATER MAKE-UP INLET	CLASS 150	S.O.R.F. FLG.	1
F	8"	PROCESS CONDENSATE OUTLET	CLASS 150	S.O.R.F. FLG.	1
G	8"	PROCESS CONDENSATE OUTLET	CLASS 150	S.O.R.F. FLG.	1
H	6"	VENT	CLASS 150	S.O.R.F. FLG.	1
J	3"	LEVEL TRANSMITTER	CLASS 150	S.O.R.F. FLG.	1
K	2"	LEVEL SWITCH	CLASS 150	S.O.R.F. FLG.	1
L	3/4"	TE	3000#	HALF CLPG. NPTF	1
M	3/4"	TI	3000#	HALF CLPG. NPTF	1
N	1"	SAMPLE	CLASS 150	S.O.R.F. FLG.	1
P	8"	PSV	CLASS 150	S.O.R.F. FLG.	1
Q	2"	PROCESS CONDENSATE INLET	CLASS 150	S.O.R.F. FLG.	1
R	16"	AGITATOR	CLASS 150	S.O.R.F. FLG.	1

1

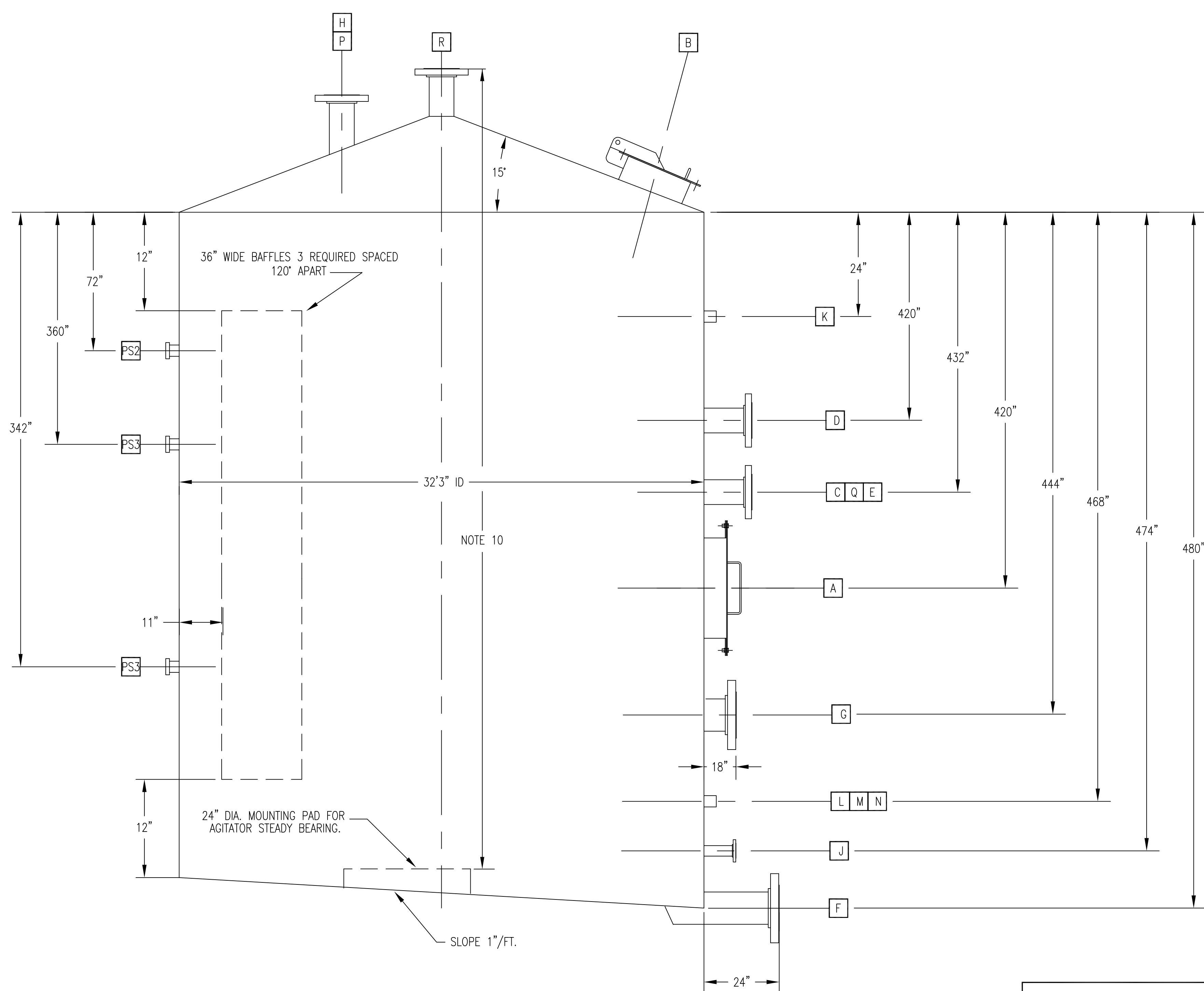
2

3

4

5

6



ELEVATION

NOTES:
 1. 360" HANDRAIL REQUIRED ON TANK ROOF WITH LADDER TO GRADE.
 2. TANK FOUNDATION IS 2'-6" ABOVE GRADE.

TANK DATA

D E S I G N	TAG NUMBER:	TK-7601	
	DESCRIPTION:	PROCESS CONDENSATE TANK	
	P&ID NUMBER:	61310-PI-7601	
	FABRICATION TYPE:	FIELD FABRICATED, VERTICAL	
	NAT'L BOARD STAMP:	N/A	
	CODE:	API 650	
	CODE STAMP:	NO	
	EARTHQUAKE FACTOR:	PER DELTA-T SPEC 61310-SITECOND-001	
	BASIC WIND SPEED:	PER DELTA-T SPEC 61310-SITECOND-001	
	OPERATING PRESSURE:	PSIG 0.5	
	OPERATING TEMPERATURE:	°F 170	
	DESIGN PRESSURE:	"H2O VAC / PSIG 3.5" / 0.25	
	DESIGN TEMPERATURE: (MIN/MAX)	°F -5 / 300	
	VOLUME, NOMINAL:	GAL 219,980	
	VOLUME, TOTAL:	GAL 244,422	
FLUID SPECIFIC GRAVITY:	0.99		
EMPTY WEIGHT:	LB. N/A		
FLOODED WEIGHT:	LB. N/A		
M A T E R I A L	BOTTOM:	A240 TP 304	
	SHELL:	A240 TP 304	
	ROOF:	A240 TP 304	
	INTERNAL STEEL:	A240 TP 304	
	EXTERNAL STEEL:	A 36 CS	
	INTERNAL PIPING:	A240 TP 304	
	NOZZLES: (FLANGES)	A182 TP 304	
	(NECKS)	A312 TP 304	
	MANHOLE NOZZLE:	A312 TP 304	
	MANHOLE COVER:	A182 TP 304	
	COUPLINGS:	A312 TP 304	
	BOLTS NUTS:	A193 GR. B7 / A194 GR. 2H	
	GASKETS:	ANSI B16.5 GASKET, GARLOCK 3000, PTFE OR EQUAL, OR EPDM	
	ELECTRODES:	ER308L / E308L	
	CORROSION ALLOWANCE:	N/A	
M I S C D A T A	STRESS RELIEF:	N/A	
	GRINDING:	N/A	
	SURFACE PREP. INT.:	N/A	
	SURFACE PREP. EXT.:	N/A	
	PAINT INTERIOR:	N/A	
	PAINT EXTERIOR:	N/A	
	INSULATION:	3" FIBERGLASS OR MINERAL WOOL BY OTHERS	
	CLEANING:	N/A	
	T E S T I N G	HYDROSTATIC TESTING:	YES
		RADIOGRAPHY:	NONE

NOZZLE SCHEDULE

MK	SIZE	SERVICE	RATING	TYPE	QTY
A	24"	MANWAY	API 650 STD.	S.O.R.F. FLG. W/COVER, HINGE	1
B	20"	HATCH	API 650 STD.	S.O.R.F. FLG. W/COVER, HINGE	1
C	6"	PROCESS CONDENSATE INLET	CLASS 150	S.O.R.F. FLG.	1
D	6"	PROCESS CONDENSATE RECIRC	CLASS 150	S.O.R.F. FLG.	1
E	4"	WATER MAKE-UP INLET	CLASS 150	S.O.R.F. FLG.	1
F	8"	PROCESS CONDENSATE OUTLET	CLASS 150	S.O.R.F. FLG.	1
G	8"	PROCESS CONDENSATE OUTLET	CLASS 150	S.O.R.F. FLG.	1
H	6"	VENT	CLASS 150	S.O.R.F. FLG.	1
J	3"	LEVEL TRANSMITTER	CLASS 150	S.O.R.F. FLG.	1
K	2"	LEVEL SWITCH	CLASS 150	S.O.R.F. FLG.	1
L	3/4"	TE	3000#	HALF CPLG. NPTF	1
M	3/4"	TI	3000#	HALF CPLG. NPTF	1
N	1"	SAMPLE	CLASS 150	S.O.R.F. FLG.	1
P	8"	PSV	CLASS 150	S.O.R.F. FLG.	1
Q	2"	PROCESS CONDENSATE INLET	CLASS 150	S.O.R.F. FLG.	1
R	16"	AGITATOR	CLASS 150	S.O.R.F. FLG.	1

NOTES:

- ALL MATERIAL TO BE NEW, FREE OF PITS, SCALE OR ANY OTHER FOREIGN MATERIAL.
- REMOVE ALL BURRS AND BREAK ALL SHARP EDGES 0.01" MAX ON WELDMENTS.
- ALL WELDS TO MAINTAIN THE STRUCTURAL INTEGRITY OF THE BASE MATERIAL.
- ALL WELDS TO BE CONTINUOUS AND AIRTIGHT UNLESS NOTED.
- WELD ALL SEAMS BOTH SIDES UNLESS NOTED.
- NOZZLE PROJECTION SHALL BE 6" UNLESS OTHERWISE NOTED.
- FINAL NOZZLE ELEVATIONS AND ORIENTATIONS TO BE FIXED AT VENDOR DRAWING SUBMITTAL AND PIPING LAYOUT.
- ALL DIMENSIONS IN FEET & INCHES UNLESS NOTED OTHERWISE
- NOT FOR FABRICATION.
- CONTROL DIMENSION FOR AGITATOR SHOWN ON SHOP FABRICATION DWGS.
- NOZZLE "N" TO PROVIDE AGITATOR SUPPORT. NOZZLE "N" AND BAFFLES ON HOLD PENDING AGITATOR VENDOR SELECTION.

CONFIDENTIAL

REVISIONS					
REV	DATE	DESCRIPTION	BY	CKD	APP
C	24JAN07	ISSUE FOR DESIGN BEV	BD		
D	22FEB07	UPDATED DIMS/DESIGN	JT		

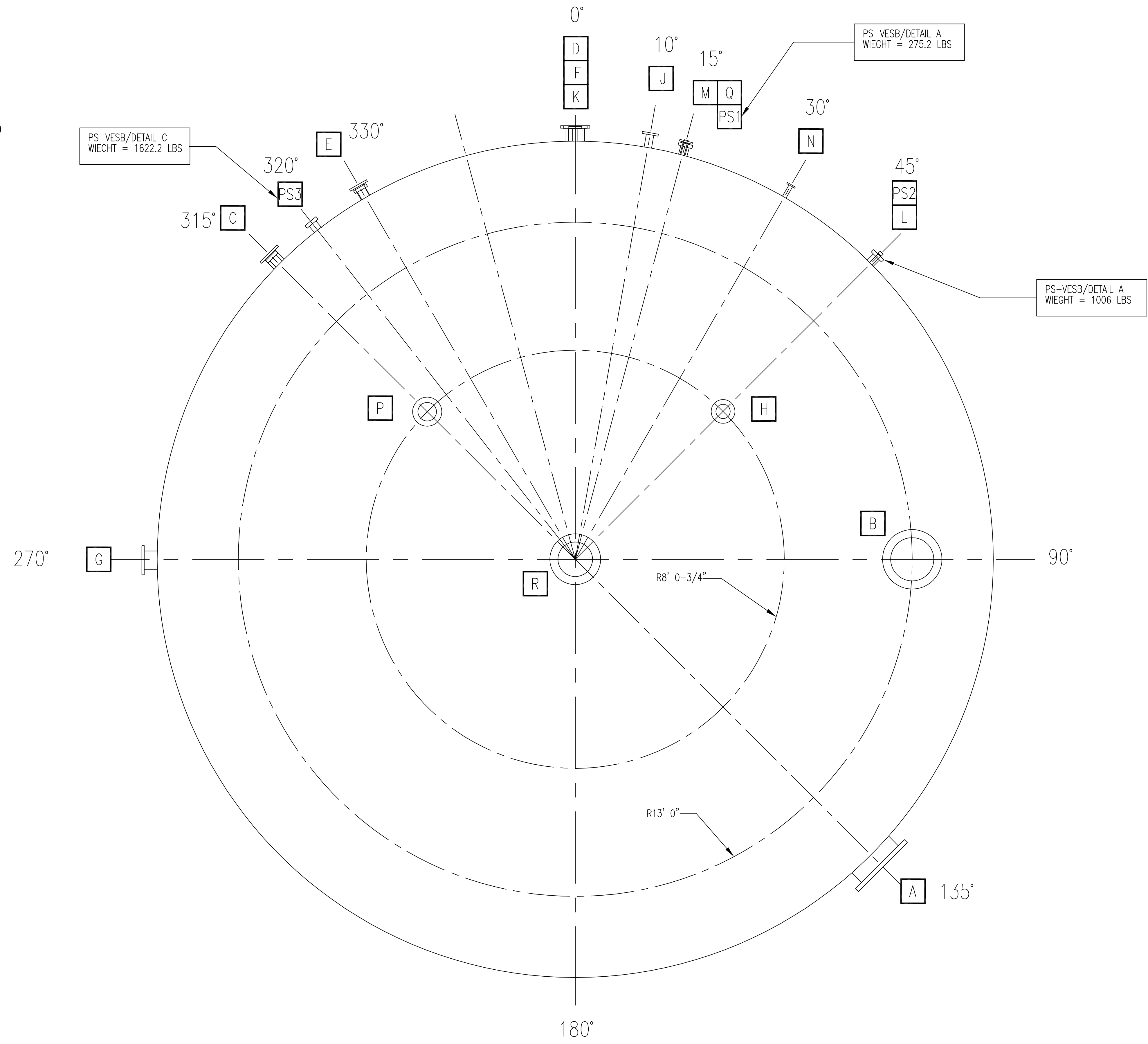


www.deltatcorp.com
 Voice (757)220-2955 Fax (757)229-1705
 Drawn By: CE Date: 19SEPT05

Dwg No.	61310-Q-TK7601-1
Title	TK-7601 PROCESS CONDENSATE TANK
Client Information	BUNGE-ERGON VICKSBURG
Location	VICKSBURG, MS

A B C D E F G H I

1
2
3
4
5
6



ORIENTATION PLAN

REVISIONS					
REV	DATE	DESCRIPTION	BY	CHK	APP
C	24JAN07	ISSUE FOR DESIGN	BEV	BD	
D	22FEB07	UPDATED DIMS/DESIGN	JT		

Delta-T
www.deltatcorp.com
Voice (757)220-2955 Fax (757)229-1705
Drawn By: CE Date: 19SEPT05

CONFIDENTIAL

Dwg No. 61310-Q-TK7601-2

Title TK-7601
PROCESS CONDENSATE TANK
NOZZLE ORIENTATION

Client Information BUNGE-ERGON VICKSBURG

Location VICKSBURG, MS